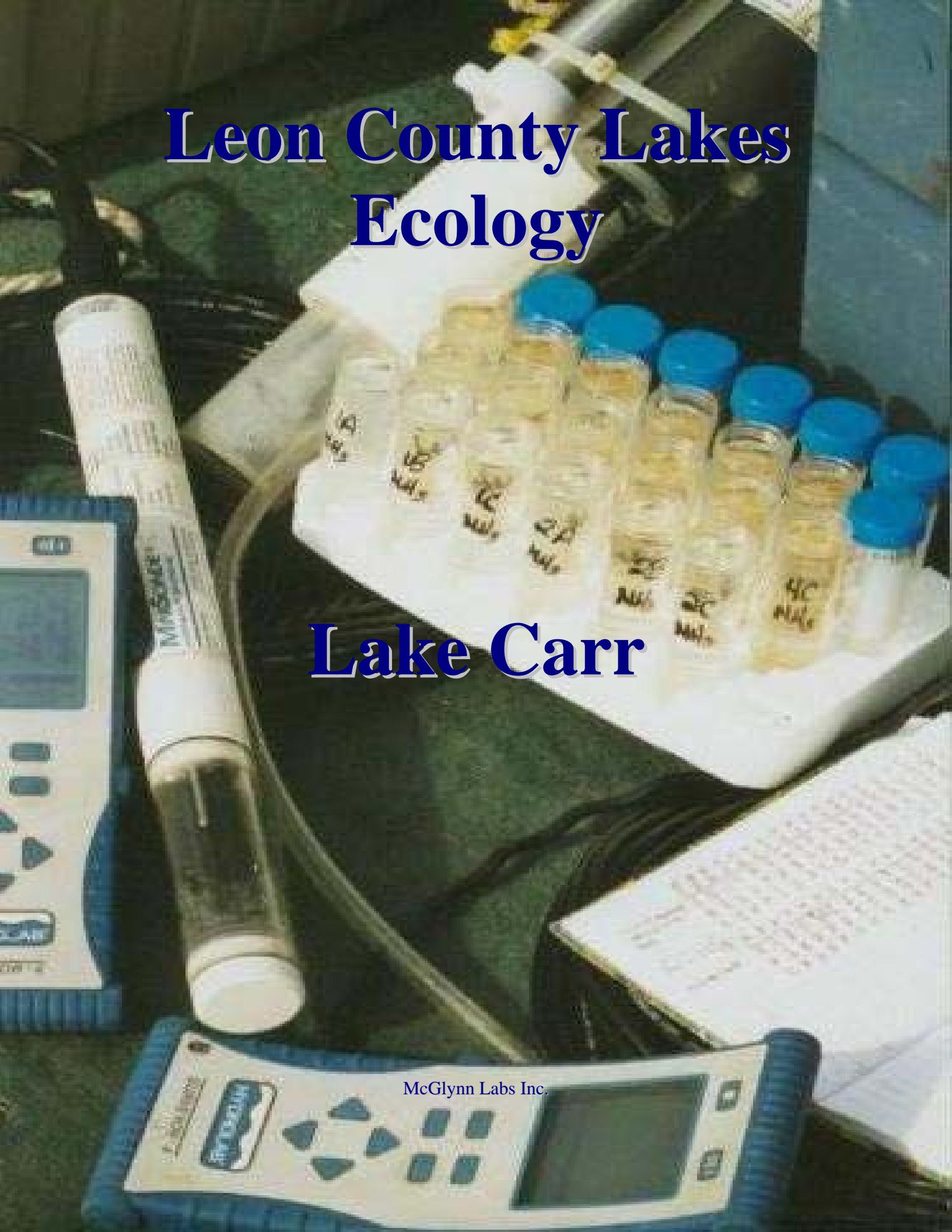


Leon County Lakes Ecology

Lake Carr

McGlynn Labs Inc.



4.4.1: Lake Carr

Surface Area: 692 acres

Number of Stations: 1

Duration of Monitoring: 10/99-09/04

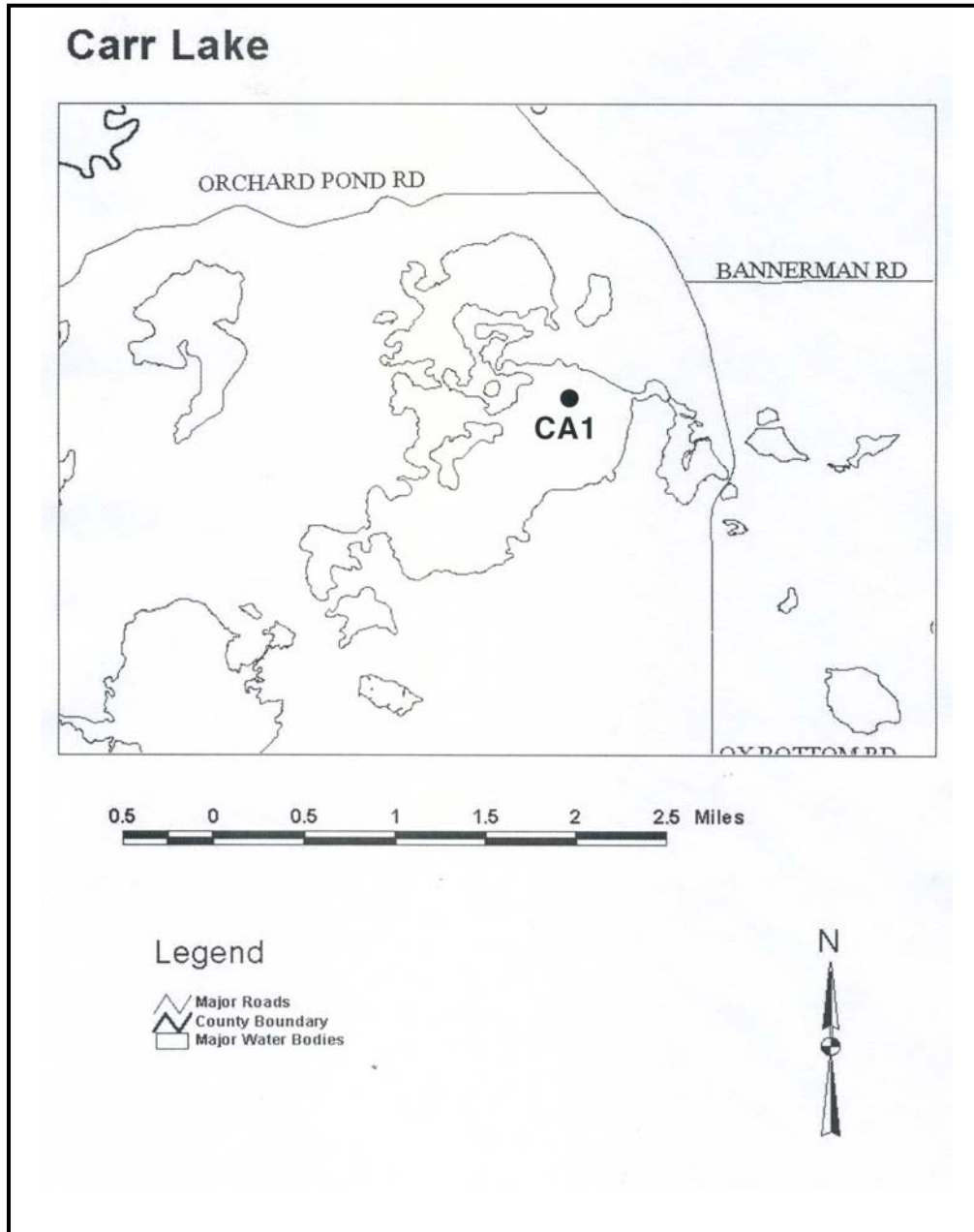


Figure 4.4.1.1: Lake Carr station map

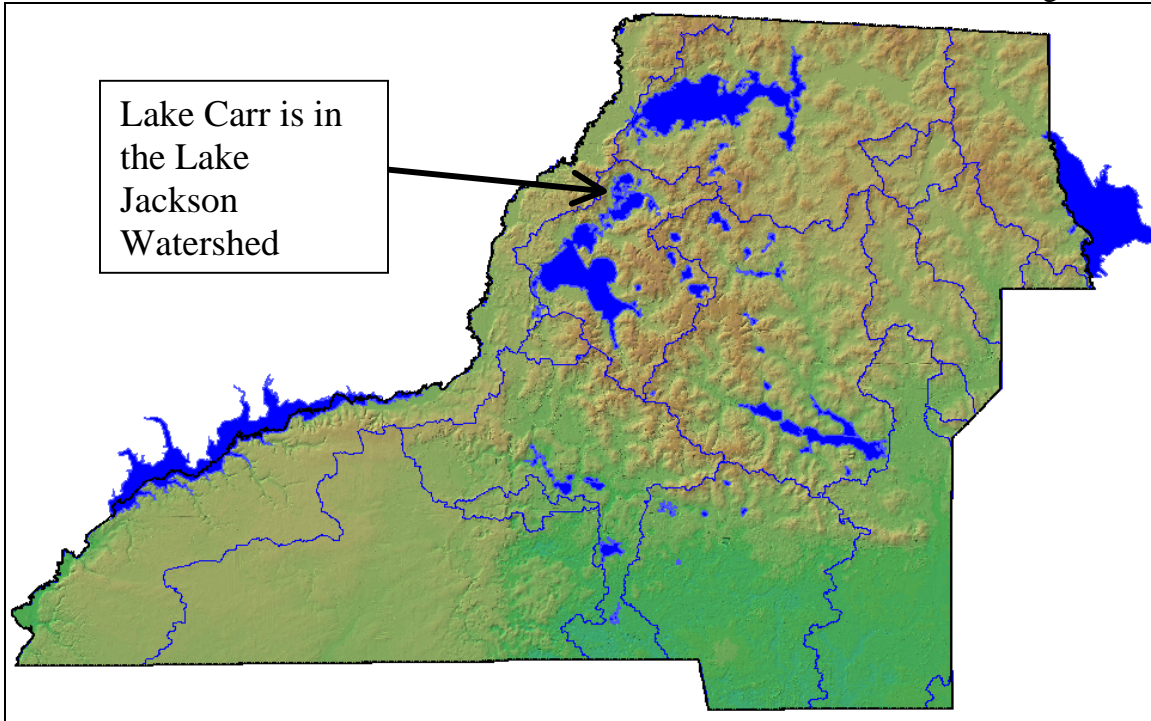


Figure 4.4.1.2: Lake Jackson Watershed Map by Greg Mauldin, Tallahassee-Leon County GIS

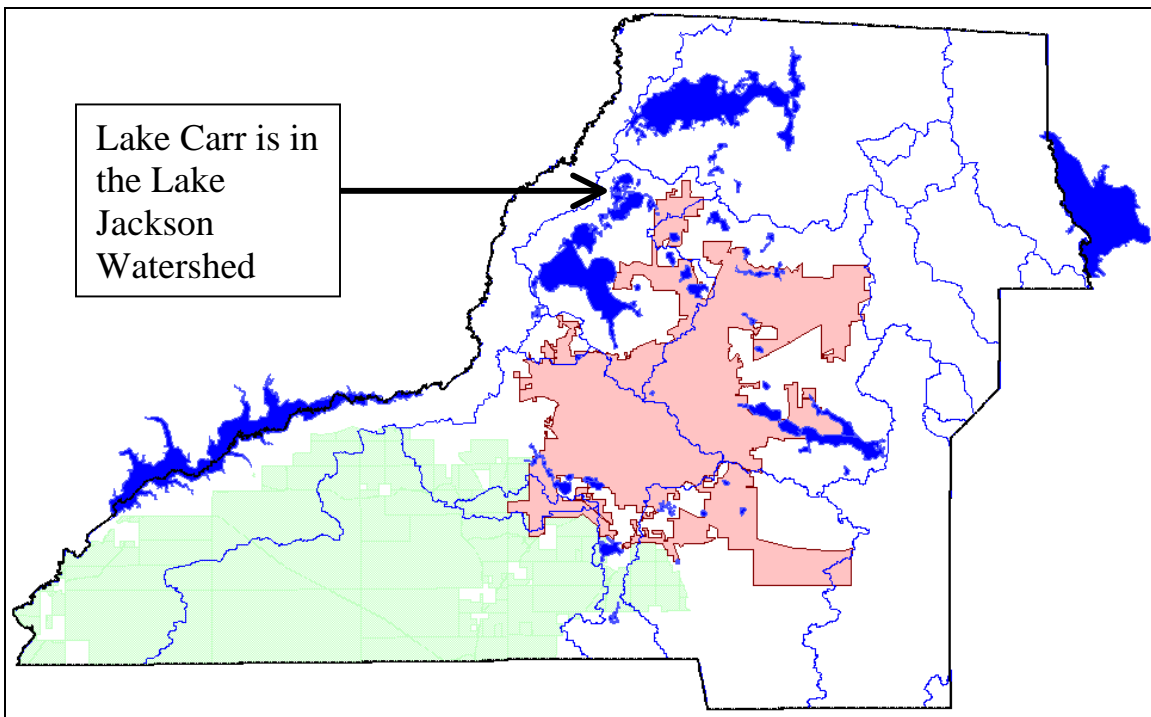


Figure 4.4.1.3: Lake Jackson Watershed Map by Greg Mauldin, Tallahassee-Leon County GIS

Lake Carr lies north of Lake Jackson, bordering Iyavalla Plantation and the Ochlockonee River. Most of this lake is extensively vegetated with tussocks (floating islands). There is an open water portion of Lake Carr that has an improved boat ramp and pier, and this lake is one of the few lakes where water skiing is possible. During the drought this was also one of the few lakes that had enough water for boating. *Hydrilla verticillata* appeared in Lake Carr at about this time. It may have been the increase in boat traffic that led to the introduction of *Hydrilla*. FDEP has been treating the *Hydrilla* with herbicides.

Most of the 692 acres of Lake Carr are only accessible by airboat, but this area is very popular for duck hunting. The TSI is borderline impaired, being a clear lake with an average TSI of 40. Water quality has been improving since the return of normal water levels.

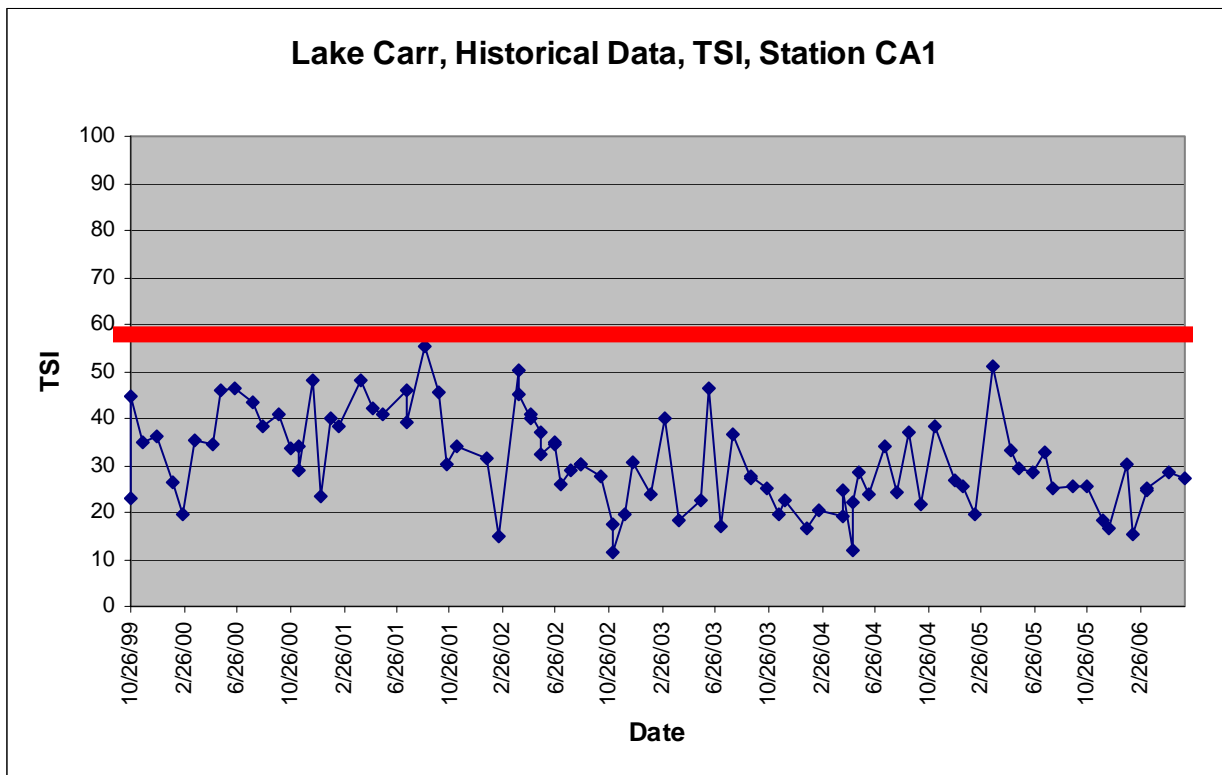


Figure 4.4.1.4: Lake Carr, Station CA1,
 Tannic lake,
 According to FDEP criteria this lake would be impaired at TSIs greater than 60 units,
 Data source LCL Data (McGlynn Laboratories Inc).
 Data duration: 10/99-09/04

*** Result: not impaired. holding steady.**

